

System kit for hands-free talking via GSM-Network



Emergency phones in areas with poor infrastructure can be operated independently via GSM connection, e. g. on motorways, waterways, railway tracks or tunnels.

Despite background noise and interfering noises, they should offer a natural, crystal-clear full duplex communication.

Thanks to patented algorithms for acoustic echo cancellation (AEC) and noise reduction (NR), our vicCOM products provide excellent audio quality and speech intelligibility for hands-free communication at the highest level - even under the most difficult environmental conditions.

The vicCOM-GSM-complete system kit offers all the necessary functionalities for emergency phones and information pillars. You will receive an audio processing module, a GSM module, audio amplifier and connections for emergency call buttons or signalling LEDs as well as relays for controlling functions.

Configuration and status signalling of the system is done comfortably via SMS.

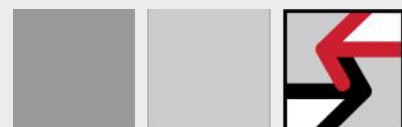
Product Features

- System kit for devices with GSM-based hands-free function
- Easy assembly with screw terminals
- Acoustic echo cancellation (AEC)
- Noise reduction (NR)
- Telephone connections to one or more call destinations
- Configuration and status indication via SMS
- Connections for 2 call buttons and up to 6 signal lamps or relay switching contacts
- Direct connection for micro and loudspeaker
- Supports RFID-reader for call acceptance
- Power management for energy efficient operation

Applications

- Autarkic emergency call and information systems (e. g. along motorways, waterways, railway trucks, tunnels)
- GSM gateways for intercom systems
- GSM-based door communication

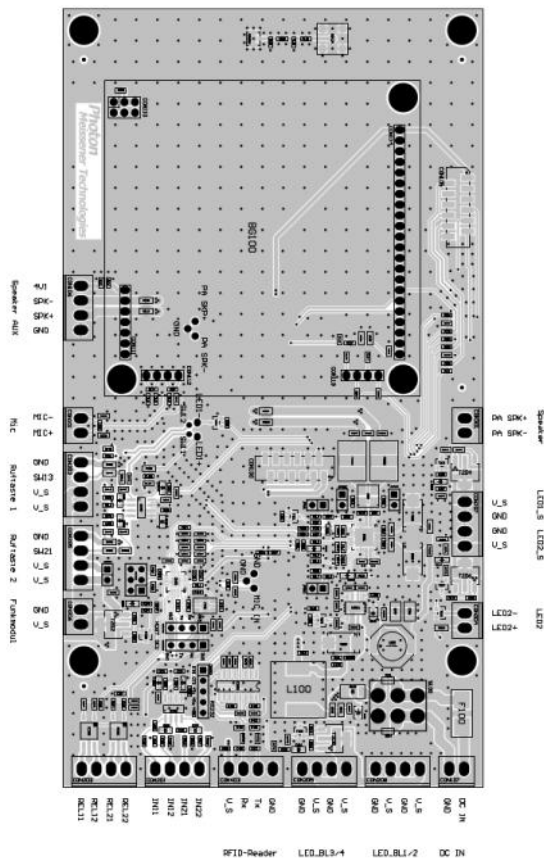
vicCOM-GSM-complete
For Emergency Phones and info columns.



voice INTER connect

Technical Data

Pin Assignment



Pin Description

Pin	Description
CON101	Microphone connection
CON106	Operating voltage vicCOM-GSM (4,1 V), Loudspeaker connector AUX
CON107	Power supply vicCOM-GSM-complete (8..32 V)
CON201	Connection Input 1 and 2
CON202	Connection call button 1
CON203	Connection Relais 1 and 2 (NOC)
CON204	Connection LED
CON205	Connection call button 2
CON206	Connection switchable operating voltage
CON207	Connection 2 x LED
CON208	Connection 2 x LED (up to 2 A)
CON209	Connection 2 x LED (up to 2 A)
CON301	Loudspeaker connector PA
CON403	Connection RFID-Reader

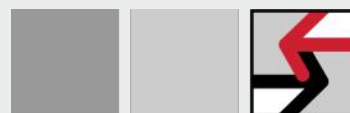
Technical Features

Power supply:	8 ... 32 VDC
Bias current:	8 / 50 mA (standby / active)
Maximum current:	2 A (dep. from periphery)
In-/Outputs:	Screw terminals
Antenna connection:	U.FL or SMA
SIM card slot:	Mini-SIM
Loudspeaker conn. PA:	4 Ohm / 9 W
Loudspeaker conn. AUX:	4 Ohm / 0,8 W
Microphone connector:	Electret capsule
Operating temperature:	-40°C ... 85°C
Dimensions (L x W x H):	185 x 100 x 35 mm
Form factor:	Module, single-sided
Weight:	Approx. 160 g



vicCOM-GSM-complete

Order Number: 1100070700-10



voice INTER connect GmbH
Ammonstraße 35
01067 Dresden

Tel.: +49 351 407 526 50

info@voiceinterconnect.de
www.voiceinterconnect.de

voice INTER connect